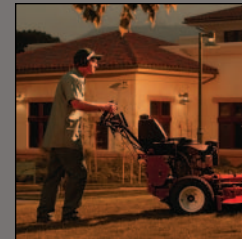
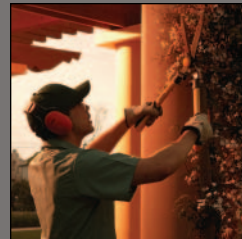




FE145 CREW CAB

Most accommodating:
4 doors
and room for **7.**



The FUSO logo is displayed in white capital letters against a dark background. To the left of the logo is a large, stylized silhouette of a person wearing a hat, set against a red and orange gradient background.

2005 MITSUBISHI FUSO



FE145 Crew Cab: One truck does the work of two.

The all-new FE145 Crew Cab combines dramatic styling and newly re-engineered cab and components with Mitsubishi Fuso's longstanding reputation for dependability. Its turbocharged 4-cylinder diesel engine is quieter and offers more torque. Its Aisin 6-speed automatic transmission offers enhanced drivability, especially on hills. The 4-door cab is partially trimmed in vinyl and offers a second bench seat to carry up to 7 passengers with plenty of room behind the cab for equipment and payload. Inside, there's more head, leg, and elbow room, new instrumentation, tilt/telescoping steering wheel, adjustable driver's seat, dash-mounted shifter and much, much more. Compare the new FE145 Crew Cab. You'll see why it's the right truck for the job.

FE145 CREW CAB

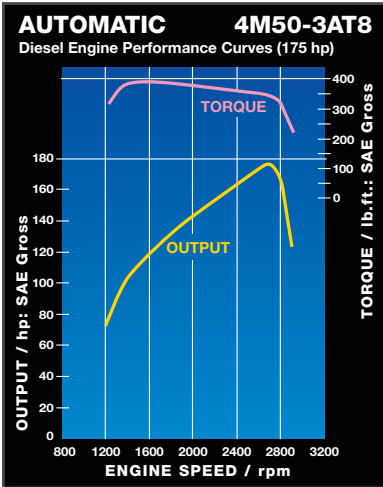
- Covered, open-grate steps stay cleaner
- New easier-to-read instrument panel
- Storage area under rear seats
- Oversized cup holder
- Dog house engine access under front seats
- Dash-mounted shifter provides more legroom
- Tilt/telescoping steering wheel with one-touch quick release





Safety

- Crush bar in each door
- Energy-absorbing steering wheel
- Daytime running lights
- Dual-caliper disc brakes with ABS, all wheels
- High-visibility halogen headlamps
- Covered, open-grate entry steps
- "Wet arm" 3-speed windshield wipers
- Forward swing doors for easy, safe entry



Engine

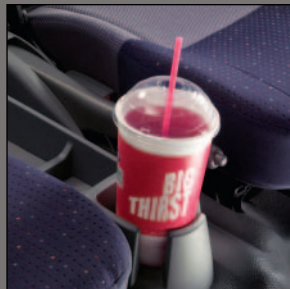
Model	Mitsubishi 4M50
Type	DOHC 4-stroke cycle, water-cooled, turbo-charged, intercooled diesel with 4 valves per cylinder and dual balance shafts
No. of cylinders	Four in-line
Piston displacement	299.0 cu.in. (4.9 liter)
Max. output (SAE, gross)	175 hp @ 2700 rpm
Max. torque (SAE, gross)	391 lb.-ft. @ 1600 rpm
Air cleaner	Dry paper element with snorkel
Starter	12-volt
Alternator	12-volt, 100-amp
Cold weather starting aid	Individual ceramic-tipped glow-plugs

Body Colors

Natural White	
Jupiter Green	
Mars Red	
Shannon Blue	

Fabric Styles

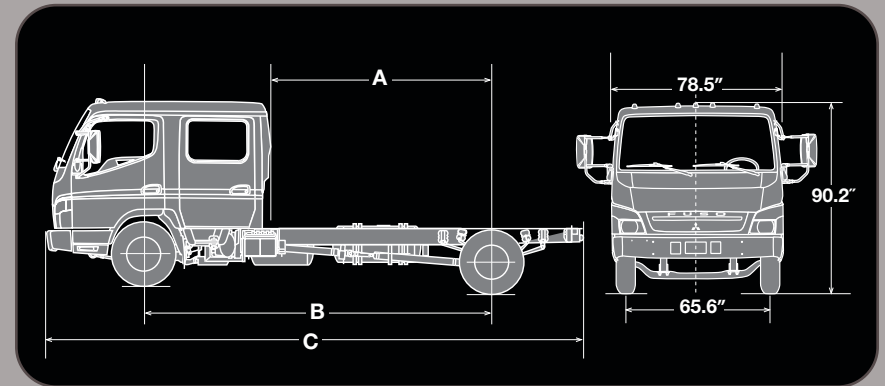
Blue Vinyl	
Blue and Gray Cloth (optional)	



FE145 Crew Cab Specifications

Chassis

Clutch	n/a
Clutch size	n/a
Transmission	
Standard transmission	Aisin Electronic 6-speed OD AT
Optional transmission	n/a
Estimated top speed (mph)	75
Axles	
Front	Reverse Elliot, I-beam type, 5,510-lb. capacity
Rear	Full floating type, 9,920-lb. capacity
Final reduction gear	Single-reduction hypoid gear
Ratio	5.285
Curb weight base model	6,261 lb.
Turning diameter (min. wheelbase)	48.2 ft.
Tires (premium)	Single front, dual rear
Size	215/85R16 10PR All-season all positions
Disc wheel	16"x6"/6-lug
Steering	Ball-nut-type with integral-type hydraulic power booster Tilt/telescoping steering column with steering lock
Windows/door locks	Manual
Suspension	
Front	Laminated leaf springs with shock absorbers and stabilizer bar
Rear	Laminated leaf springs with shock absorbers and stabilizer bar
Brakes	
Service	Dual-caliper disc, hydraulic-type w/ vacuum servo assist w/ ABS
Parking	Drum/driveline, internal expanding shoe
Exhaust	Vacuum actuated
Frame	
Type	Ladder/tapered
Section modulus	8.45 cu.in.
Yield strength	44,000 psi
RBM per rail	371,800 lb.-in.
Height/width	33.0"/29.6"
Fuel tank	33-gallon side mount
Electrical system	Two 12-volt, maintenance-free batteries – 799 CCA EA
Vehicle safety	Energy-absorbing steering wheel, crush bars in doors, daytime running lights and ABS standard



Dimensions

A. Usable cab to rear axle	103.4"
B. Wheelbase	164.2"
C. Overall length (end of frame)	255.3"
Body size accommodated	14' 16'

Weight (lb.)*

GVMR (lb.)/GAWR (lb.)	14,500	Front 5,360	Rear 9,880
GCWR (lb.)	19,503		
Max. body-payload capacity (lb.)	8,239		

*Weight approximate. See dealer for details.



MITSUBISHI FUSO TRUCK OF AMERICA, Inc.

2015 Center Square Road
Logan Twp., NJ 08085

For the dealer nearest you,
or for more information,
visit our web site at:

www.mitfuso.com

Vehicle specifications are subject to change without notice. Photos and descriptions included on this spec sheet may vary in comparison to actual vehicle models.

♻️ PRINTED IN THE U.S.A. ON RECYCLED AND RECYCLABLE PAPER 6/04.
©2004 MITSUBISHI FUSO TRUCK OF AMERICA, Inc.