

ENGINEERING ORDER (P)

PRODUCTION ORDER

*1. RL:RELEASE OF LIST RD:RELEASE OF DWG RC:RELEASE OF CPT RS:RELEASE OF SPEC OP:ORDER FOR PRODUCTION GR:GENERAL REQUIREMENT
 CL:CHANGE OF LIST CD:CHANGE OF DWG CC:CHANGE OF CPT CS:CHANGE OF SPEC DT:ORDER FOR TEST SS:SUPERSEDING OF EO
 DL:OBSOLETION OF LIST OD:OBSOLETION OF DWG OC:OBSOLETION OF CPT OS:OBSOLETION OF SPEC LP:LEAD PROCUREMENT CN:CANCELATION OF EO
 VL:REVIVAL OF LIST VD:REVIVAL OF DWG VC:REVIVAL OF CPT VS:REVIVAL OF SPEC PP:PRE PRODUCTION UD:UNIFIED DWG
 TCL:TEMPORARY CHANGE OF LIST TCD:TEMPORARY CHANGE OF DWG TCC:TEMPORARY CHANGE OF CPT TCS:TEMPORARY CHANGE OF SPEC

*3. R:RELEASE L:CHANGE OF PPS
 C:CHANGE
 O:OBSOLETION
 V:REVIVAL

*2. : 試作・着工区分 (PROTOTYPE OR PRODUCTION STATUS)

*4. P:CATIA DWG

*1. 区分 SUBJECT	図面・リスト番号 DWG-LIST NO.	符号 CL	部番 PART NO. 発注部番 ORDERING PART NO.	*2. PPS	*3. IDENT	名称 PART NAME 発注部品名称 ORDERING PART NAME	同時実施 SIMUL-TANEOUS CODE	先行実施 MAY BE INCOR- PORATED PRIOR TO OTHERS	記 事 DESCRIPTION	加工 WORKING SHGP 加工後 FOLLOWING PROCESS	記 事 DESCRIPTION
OP	8N6096A	-				EO			<1> <2> <3>		

発行理由 REASON FOR RELEASE (03)
 :36 :仕様追加
 36:TO ADD SPECIFICATION

実施 :
 EFFECTIVITY EB
 <4>

同時実施EO:
 SIMULTANEOUS EFFECTIVE EO

関連EO REFERENCE EO: 8N0421

<4> PRODUCTION ORDER OF RUPD FOR TF EAGLE.
 IMPLEMENT THIS EO UNTIL EO: 8N0421 BECOME
 EFFECTIVE.
 <5> PE_EV(AVL)-00572 (ICM: I-180284301)

REQUESTED BY: <5>
 CRNO.: I-180284301
 SERVICE BULLETIN: N
 GOVERNMENT APPROVAL: N
 OWNER'S MANUAL: N
 CRAFTID:

担当G(課): トラックフレーム設計
 SECTION: Frame Structure Fuso
 DWN: C.S
 CHKD: 小此木
 APVD:
 MATL:

TELNO: 4231 DATE: 2018.05.30
 T. Yashima (印)
 2018.5.31

ランニング(実施予定)
 (1) : 年 月 日
 (2) : 年 月 日
 (3) : 年 月 日
 年 式: ~
 指 定: 年 月 日
 D/B反映: 月 旬
 切換条件:

納入予定: 年 月 日
 ライン区分:
 先行実施: 可・否
 管理区分: A・B・C・Z
 回答書: 有・無

計画G
 PRODUCTION
 PLANNING
 SECTION

認可:
 担当:

件名:
 TITLE: PRODUCTION ORDER OF RUPD FOR TF EAGLE

配布先
 特定: N
 SPECIAL
 正規: Y
 NORMAL

K	CL	EQ NO.	REVISION	DATE	CHKD	MITSUBISHI FUSO TRUCK & BUS CORPORATION	型式 MODEL TF EAGLE	FCCC	EO番号 EO NO. 8N6096	PAGE 1/3	BM
---	----	--------	----------	------	------	--	----------------------	------	-----------------------	-------------	----

ENGINEERING ORDER (A)-1

RUPD(Rear underrun protection device)追加の為、下記のとおり部品手配願います。
Please arrange the following parts, due to additional RUPD(Rear underrun protection device).

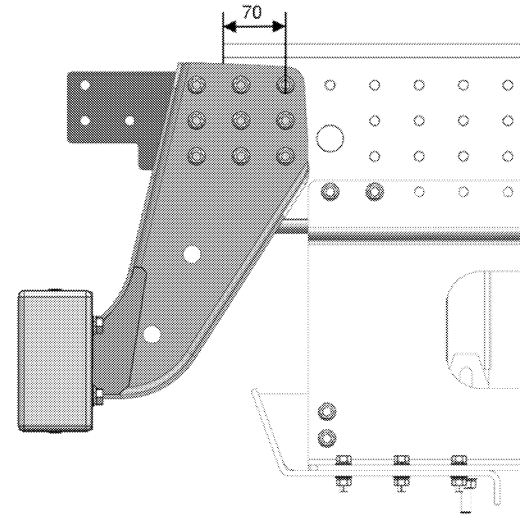
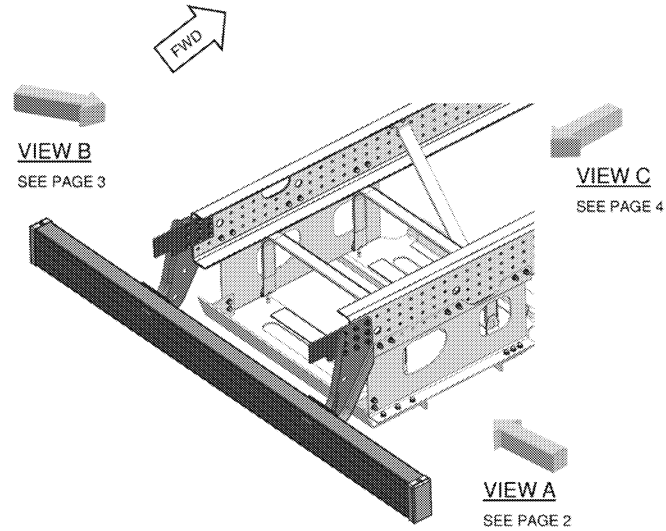
<1> 対象機種/手配部品
Target model / Parts order

IS			WAS			Model [TF Eagle]										Remarks
Part No.	Part name	QTY	Part No.	Part name	QTY	FECZTEL9SUH9	FECZTGL9SUH9	FECZTHL9SUH9	FECZTKL9SUH9	FEC7TEL9SUH9	FEC7TGL9SUH9	FEC7THL9SUH9	FEC7TKL9SUH9	FEC7THL9WUH9	FEC7TKL9WUH9	Remarks
						38	39	40	41	26	27	28	29	30	31	
MK657167	BUMPER ASSY,REAR	1	/	/	/	1	1	1	1	1	1	1	1	1	1	M63A62
ML215525	STAY,REAR BUMPER, LH	1	/	/	/	1	1	1	1	1	1	1	1	1	1	M63A62
ML215526	STAY,REAR BUMPER, RH	1	/	/	/	1	1	1	1	1	1	1	1	1	1	M63A62
MF140481	BOLT,FLANGE (12X20)	8	/	/	/	8	8	8	8	8	8	8	8	8	8	M63A62
MB200979	NUT,FLANGE (10)	18	/	/	/	18	18	18	18	18	18	18	18	18	18	M63A62
MS146812	BOLT,FLANGE (10X30)	18	/	/	/	18	18	18	18	18	18	18	18	18	18	M63A62

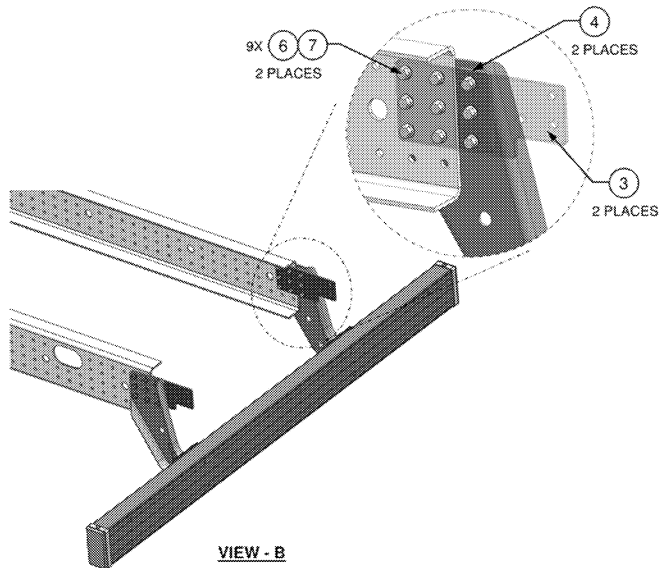
<2> Seisaku EO Order
A0K3268N6096

ENGINEERING ORDER (A)-1

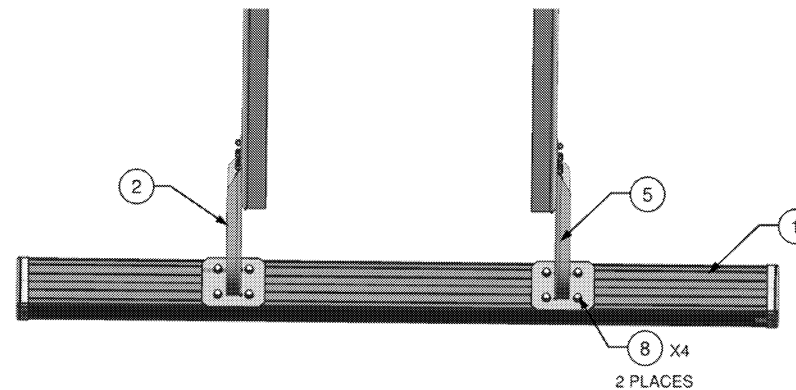
<3> Installation



VIEW - A



VIEW - B



VIEW - C